



MONTHLY MEMBERSHIP PROGRESS REPORT

District 2 T1

Results as of: 4/30/2014

GMT: HAL GRIFFIN

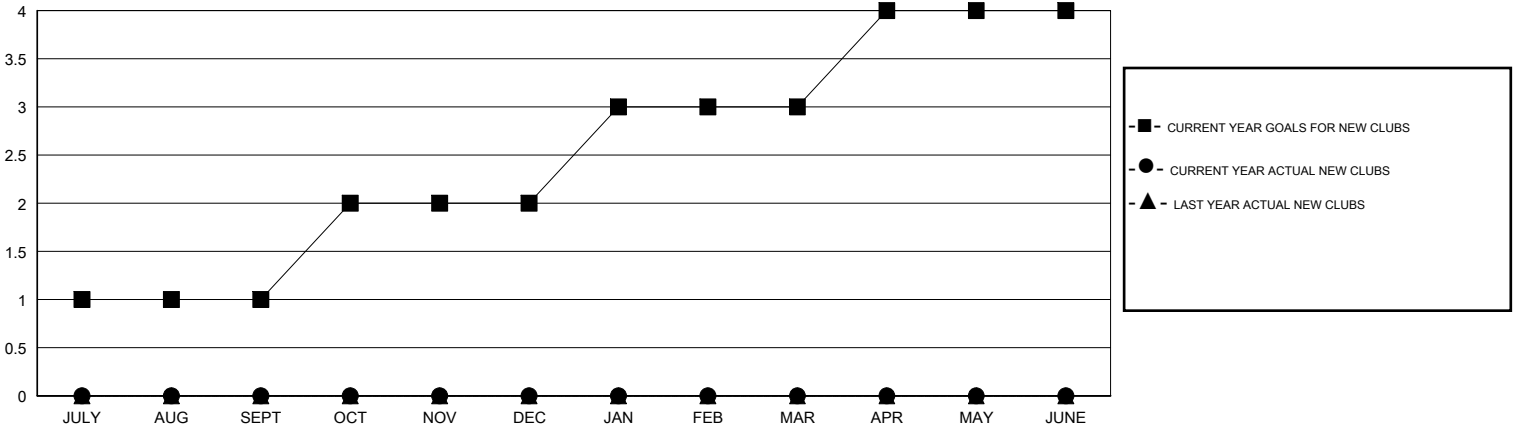
LOCATION TEXAS

GMT CA 1

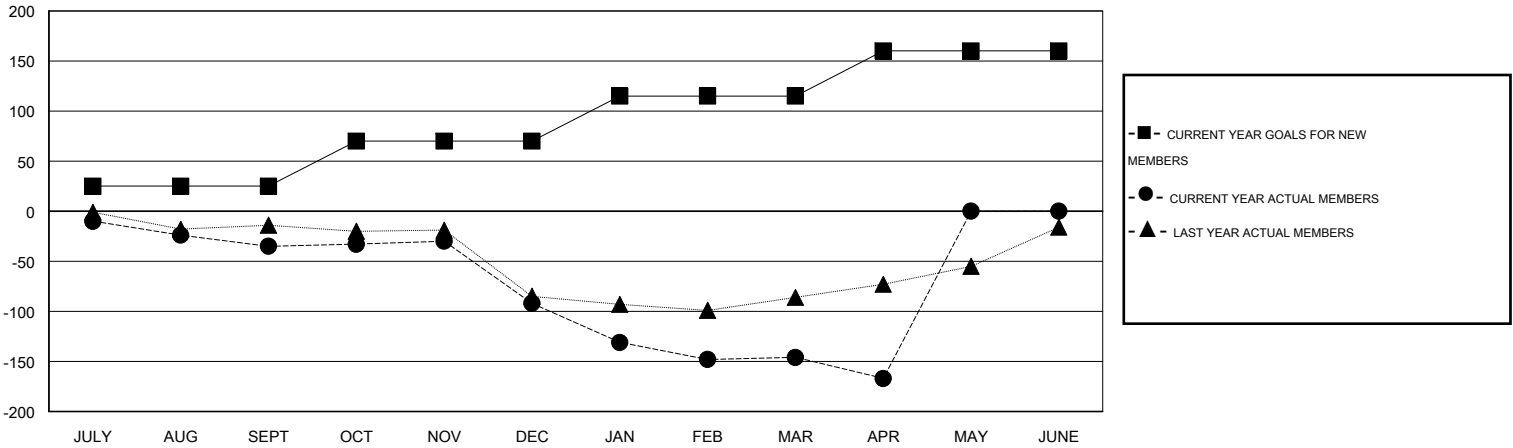
Clubs				
RESULTS FOR 2013-2014				
QUARTER	NEW CLUB GOAL	ACTUAL NEW CLUBS	ACTUAL DROPPED CLUBS	ACTUAL NET GAIN/LOSS
JULY/AUG/SEPT	1	0	0	0
OCT/NOV/DEC	1	0	4	-4
JAN/FEB/MAR	1	0	0	0
APR/MAY/JUNE	1	0	1	-1

Members				
RESULTS FOR 2013-2014				
QUARTER	NEW MEMBER GOAL	ACTUAL TOTAL MEMBERS ADDED	ACTUAL DROPPED MEMBERS	ACTUAL NET GAIN/LOSS
JULY/AUG/SEPT	25	44	79	-35
OCT/NOV/DEC	45	46	103	-57
JAN/FEB/MAR	45	47	101	-54
APR/MAY/JUNE	45	8	29	-21

GOALS AND ACTUAL NEW CLUBS CUMULATIVE



GOALS AND ACTUAL MEMBERS CUMULATIVE



DROPPED CLUBS: 5

32 CLUBS OF 49 ADDED 1 OR MORE NEW MEMBERS

GENDER DISTRIBUTION	
MALE	1,037 (74.28%)
FEMALE	359 (25.72%)

DROPPED MEMBERS	
DECEASED	16
CLUB CANCELLED	75
OTHER	221
TOTAL	312

[CLICK HERE FOR HEALTH ASSESSMENT DATA](#)

FAMILY UNIT MEMBERS	172
HEAD OF HOUSEHOLD	86
NON-HEAD OF HOUSEHOLD	86